

Rise to Immunize™

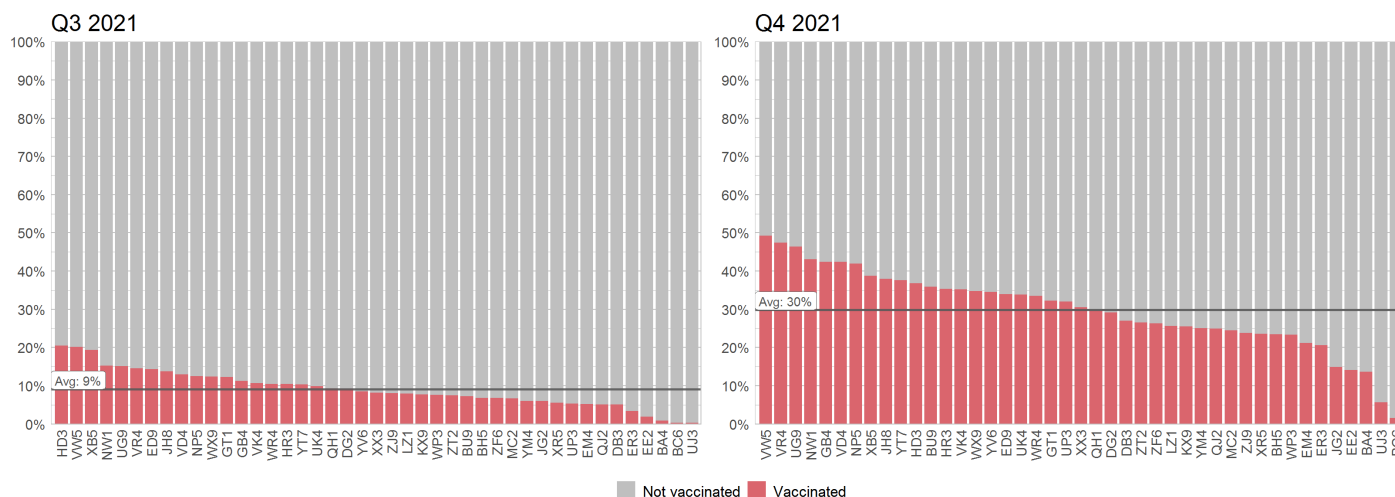
Blinded Comparative Report

March 31, 2022

Influenza (M1)

Intervention

Measurement Year 2021



Almost all organizations have lower influenza vaccination rates in Q3 2021 and Q4 2021 compared with Q3 and Q4 in both Baseline years (-6% on average in Q3 2021 vs. Q3 2020, -8% in Q4 2021 vs. Q4 2020). Some organizations have reported that there is a delay in influenza vaccination reporting from pharmacies and state registries, which may be contributing to the lower rates. If delayed reporting is the primary cause of the lower rates, than rates in Q1 2021 and Q2 2021 would be expected to rise closer to Baseline levels. It is also possible—as some organizations have pointed out—that influenza vaccination rates are just lower this year.

Top 5 Highest Influenza Vaccination Rates in Q4 2021

Org	Rank	Rate
VW5	1	49.3%
VR4	2	47.4%
UG9	3	46.4%
NW1	4	43.1%
GB4	5	42.4%

Top 5 Most Improved Orgs by Rank

of spots moved from Q4 2020 to Q4 2021

Org	Increase in Rank
XB5	10
ED9	8
DB3	6
YM4	6
LZ1	5

Top 5 Orgs with Largest Increase (or Smallest Decrease) in Rate

Change from Q4 2020 to Q4 2021

Org	Change in Rate
BA4	4%
ED9	-3%
XB5	-4%
YM4	-6%
VR4	-6%

Top 5 Highest Vaccination Rates in Q4 2021

- Congratulations to the 5 organizations with the highest influenza vaccination rates in Q4 2021! These high performers administered (or documented) flu shots for almost half of their patient population before the end of 2021!

Top 5 Most Improved Orgs by Rank

- Even as overall rates decreased compared to Baseline, these 5 organizations moved up the most spots in the benchmarking ranks in Q4 2021 (compared to rank in Q4 2020).

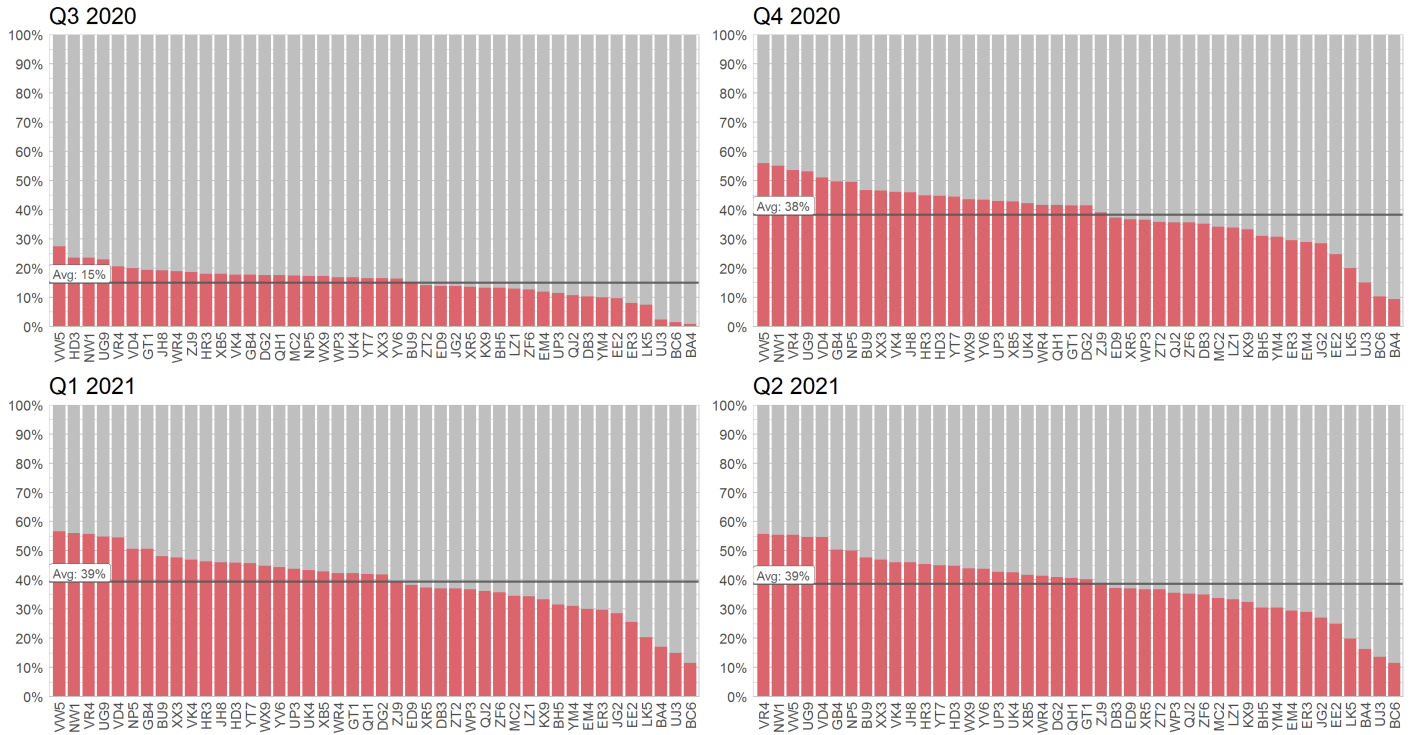
Top 5 Orgs with Largest Increase (or Smallest Decrease) in Rate

- Every organization (except for one) had a decrease in influenza vaccination rates in Q4 2021 compared to Q4 2020. These 5 groups had the least amount of decrease in flu shot rates.

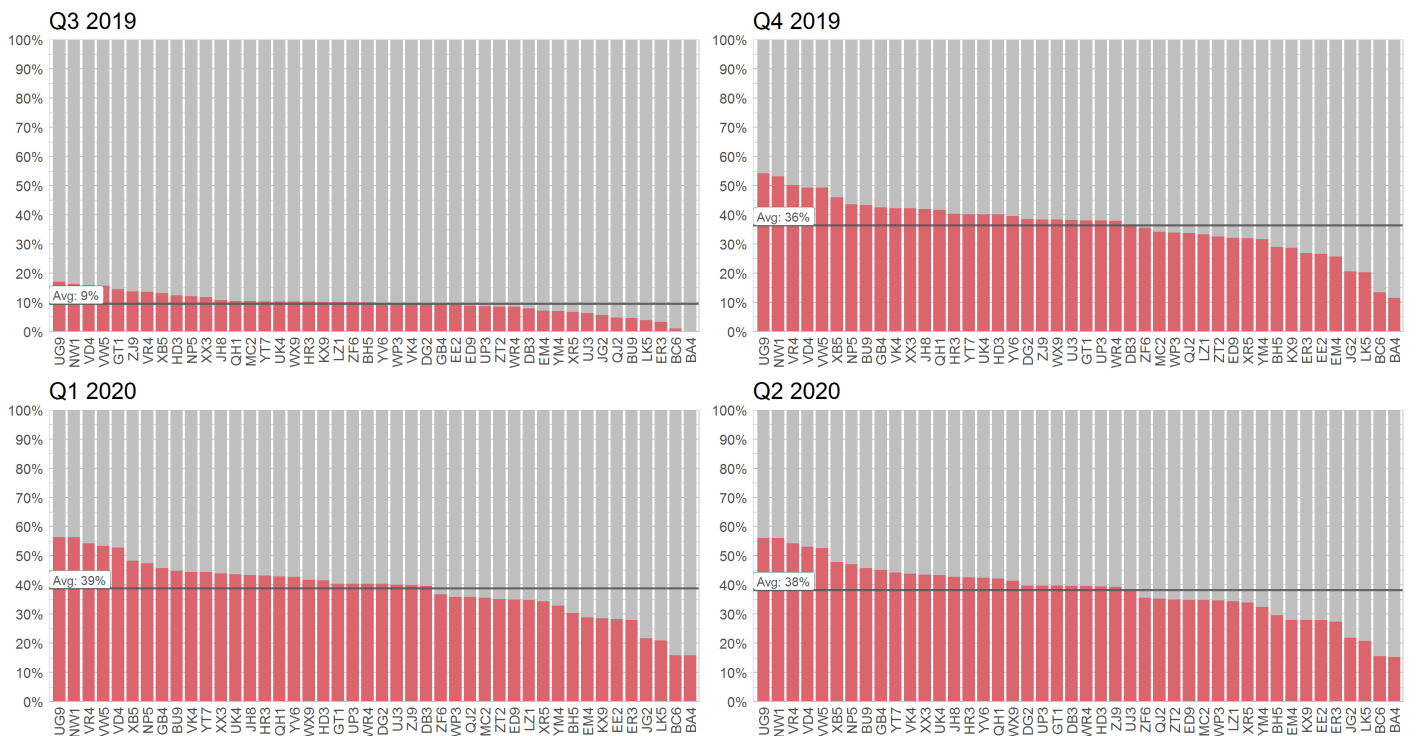
Baseline

There does not appear to be much difference in flu shot rates across organizations between the Pre-COVID (Measurement Year 2019) and Intra-COVID (Measurement Year 2020) Baseline years. The average across organizations hovered between 38% and 39% in Quarters 1 and 2 of each Baseline year, despite the onset of the COVID-19 pandemic. However, there was a small increase in Q4, where Intra-COVID rates are 2% higher on average than Pre-COVID rates, and a larger increase in Q3, where Intra-COVID rates are 6% higher on average than Pre-COVID rates.

Measurement Year 2020 (Intra-Covid)



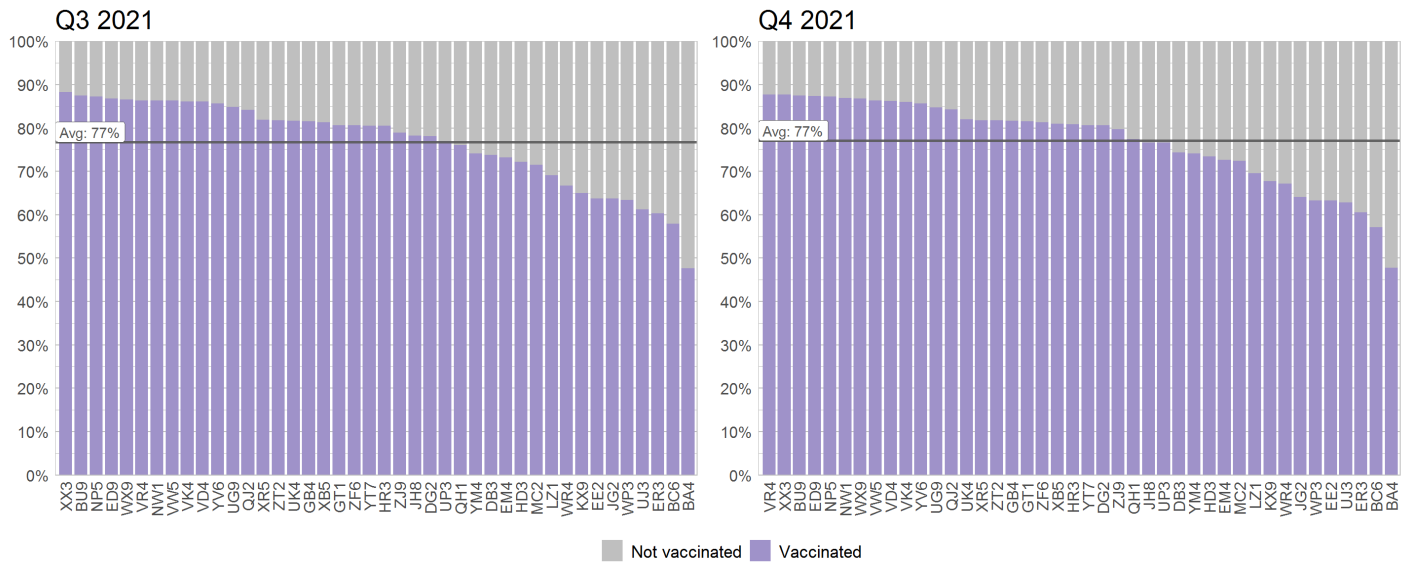
Measurement Year 2019 (Pre-COVID)



Pneumococcal (M2)

Intervention

Measurement Year 2021



The average pneumococcal vaccination rate across organizations held steady at 77% in Q4 2021 compared to Q4 in both Baseline years (78% in Q4 2020 and 77% in Q4 2019).

Top 5 Highest Pneumococcal Vaccination Rates in Q4 2021

Org	Rank	Rate
VR4	1	87.7%
XX3	2	87.7%
BU9	3	87.5%
ED9	4	87.4%
NP5	5	87.3%

Top 5 Most Improved Orgs by Rank

of spots moved from Q4 2020 to Q4 2021

Org	Increase in Rank
WX9	9
DG2	8
UK4	6
NW1	5
UG9	5

Top 5 Orgs with Largest Increase (or Smallest Decrease) in Rate

Change from Q4 2020 to Q4 2021

Org	Change in Rate
DG2	8%
KX9	4%
UJ3	2%
HR3	2%
WR4	2%

Top 5 Highest Vaccination Rates in Q4 2021

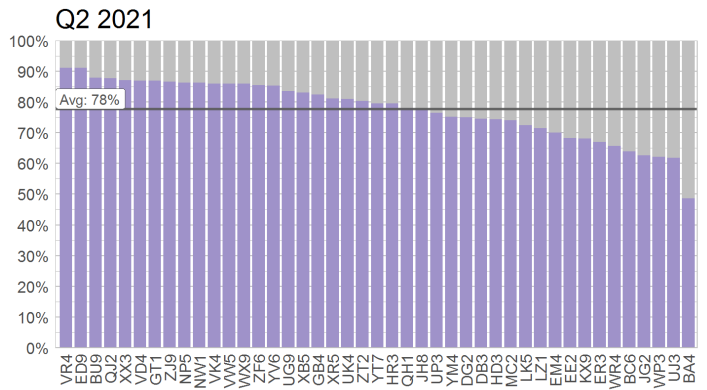
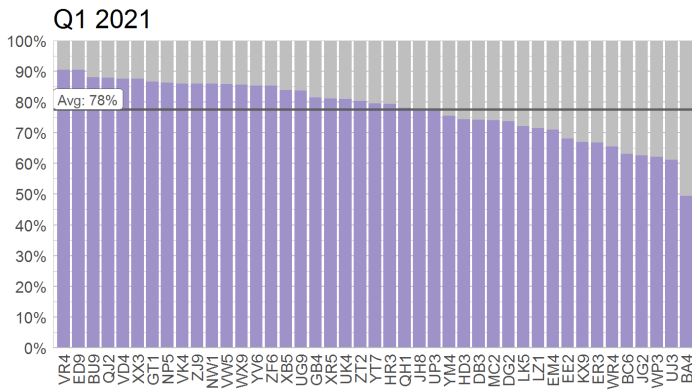
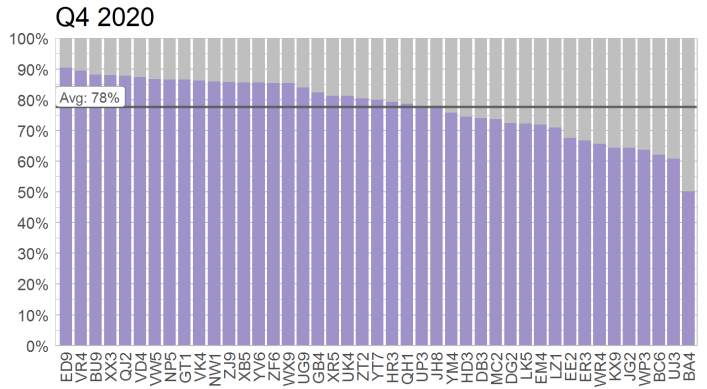
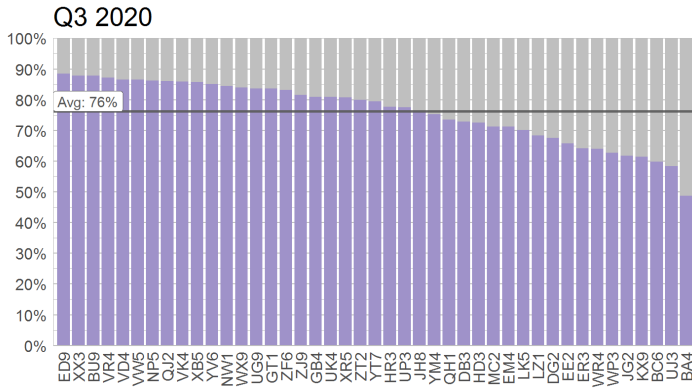
- Congratulations to the 5 organizations with the highest pneumococcal vaccination rates in Q4 2021! These top performers are within <1% of each other, so the race is tight!

Top 5 Orgs with Largest Increase (or Smallest Decrease) in Rate

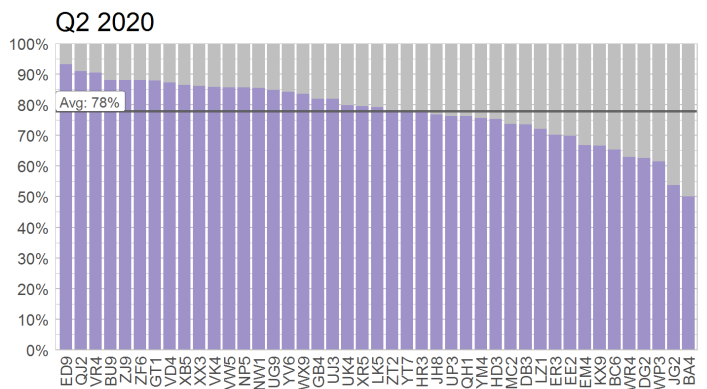
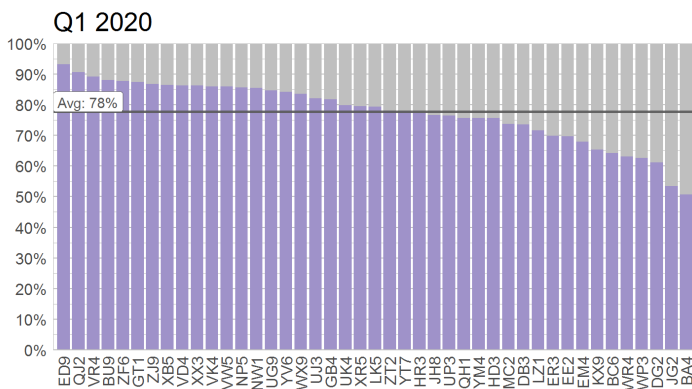
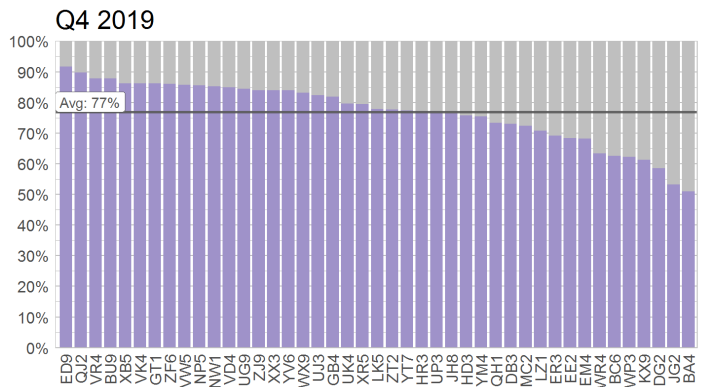
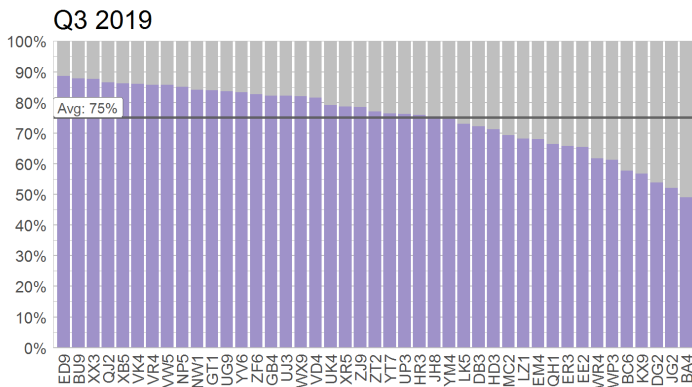
- Unlike influenza vaccination rates, some organizations saw an increase in their pneumococcal vaccination rates from Q4 2020 to Q4 2021. The highest performer increased their rate by 8%!

Baseline

Measurement Year 2020 (Intra-Covid)



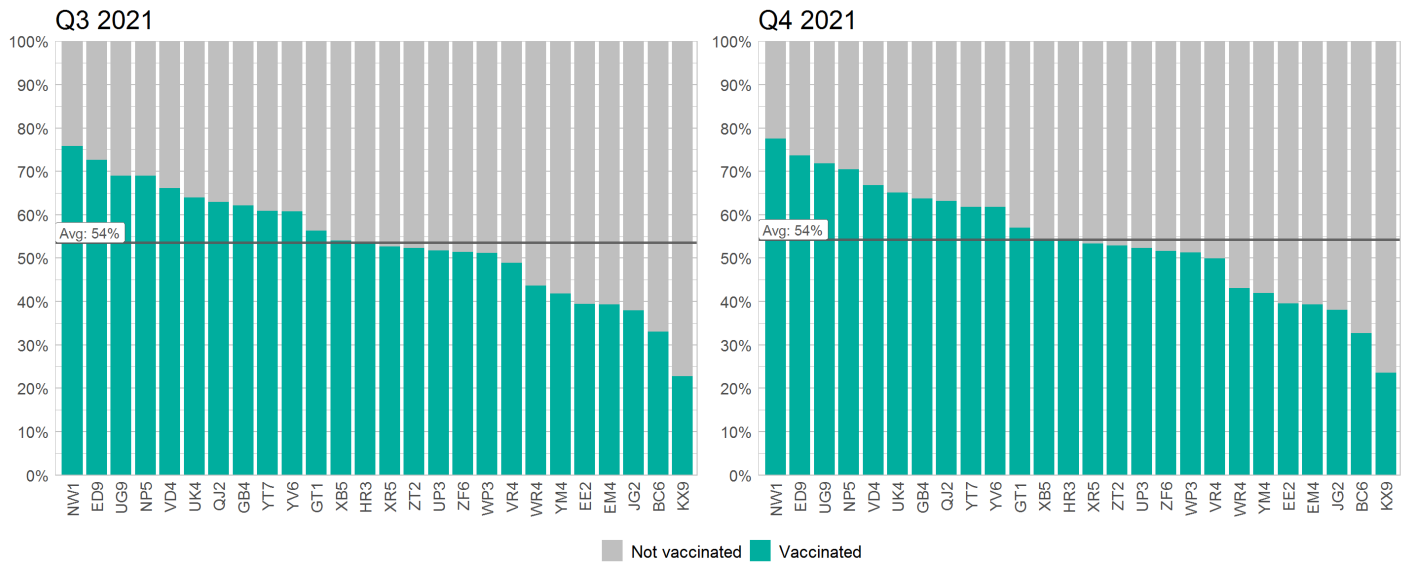
Measurement Year 2019 (Pre-COVID)



Td/Tdap (M3)

Intervention

Measurement Year 2021



Td/Tdap vaccination rates vary widely across organizations. The average Td/Tdap rates across organizations increased by about 1% in Q4 2021 compared to Q4 2020 and Q4 2019.

Top 5 Highest Td/Tdap Vaccination Rates in Q4 2021

Org	Rank	Rate
NW1	1	77.6%
ED9	2	73.7%
UG9	3	71.8%
NP5	4	70.5%
VD4	5	66.8%

Top 5 Most Improved Orgs by Rank

of spots moved from Q4 2020 to Q4 2021

Org	Increase in Rank
HR3	4
ZT2	4
GB4	3
EE2	2
UK4	1

Top 5 Orgs with Largest Increase (or Smallest Decrease) in Rate

Change from Q4 2020 to Q4 2021

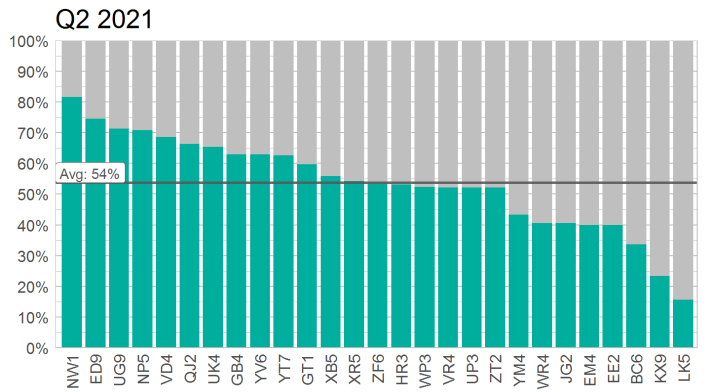
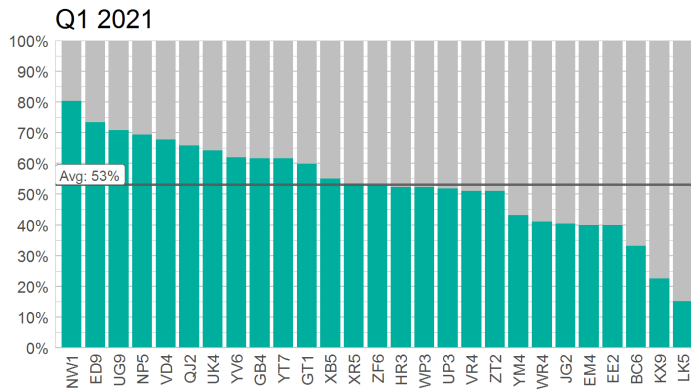
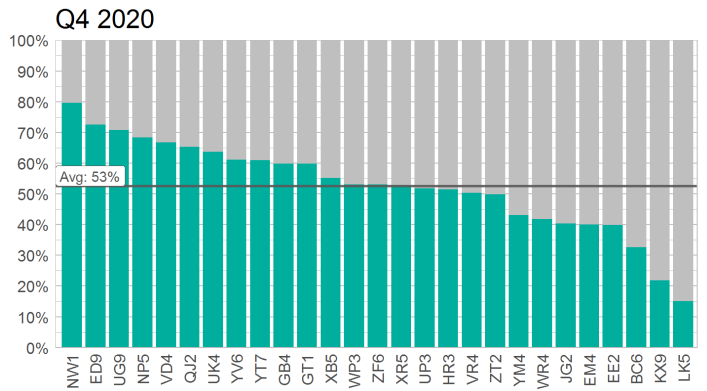
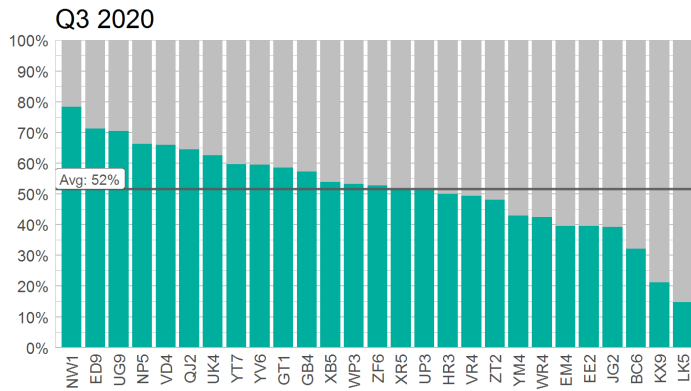
Org	Change in Rate
GB4	4%
ZT2	3%
HR3	3%
NP5	2%
KX9	2%

Top 5 Highest Vaccination Rates in Q4 2021

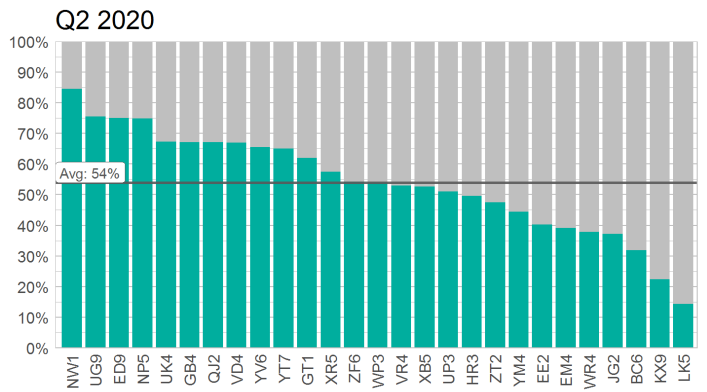
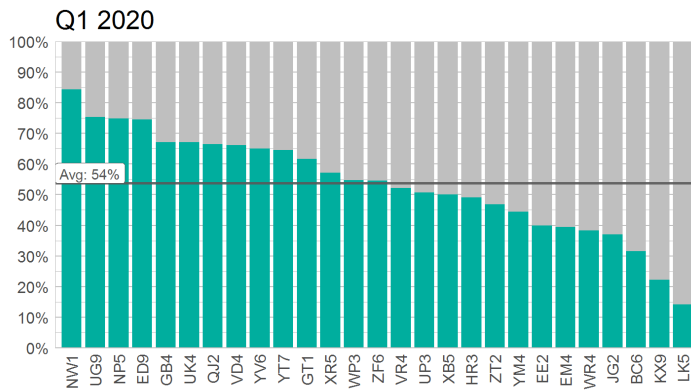
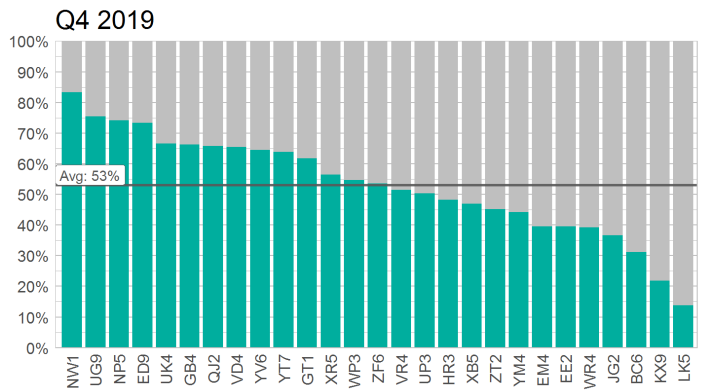
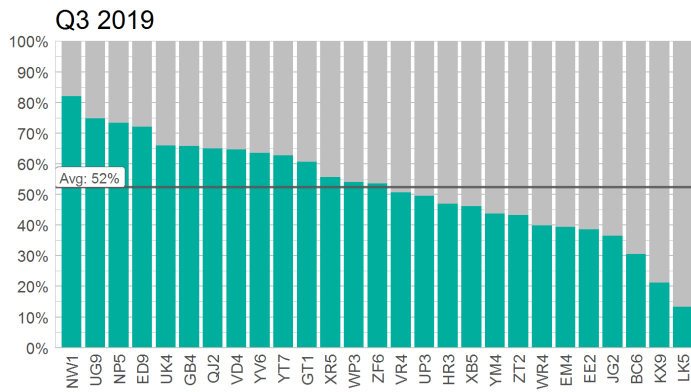
- Congratulations to the 5 organizations with the highest Td/Tdap vaccination rates in Q4 2021! More than 75% of patients in the highest performing organization are up to date with their Td/Tdap vaccination!

Baseline

Measurement Year 2020 (Intra-Covid)



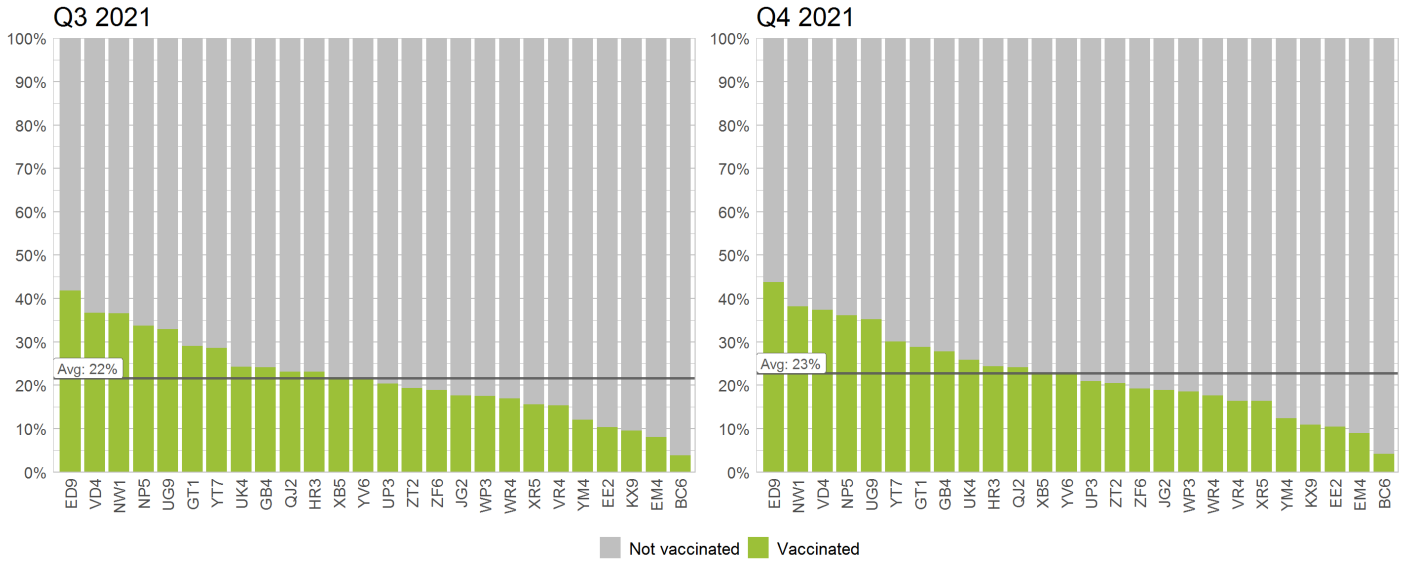
Measurement Year 2019 (Pre-COVID)



Zoster (M4)

Intervention

Measurement Year 2021



Of all the immunizations measured in Rise to Immunize, zoster had the largest increase in average immunization rates over time. The average rate across organizations in Q4 increased 6–7% each year, from 10% in Q4 2019, to 17% in Q4 2020, to 23% in Q4 2021. There is still ample opportunity for improvement in this measure as more organizations begin to administer the recombinant vaccine.

Top 5 Highest Zoster Vaccination Rates in Q4 2021

Org	Rank	Rate
ED9	1	43.8%
NW1	2	38.2%
VD4	3	37.4%
NP5	4	36.1%
UG9	5	35.2%

Top 5 Most Improved Orgs by Rank
of spots moved from Q4 2020 to Q4 2021

Org	Increase in Rank
GB4	4
YV6	2
KX9	2
NW1	1
NP5	1

Top 5 Orgs with Largest Increase (or Smallest Decrease) in Rate

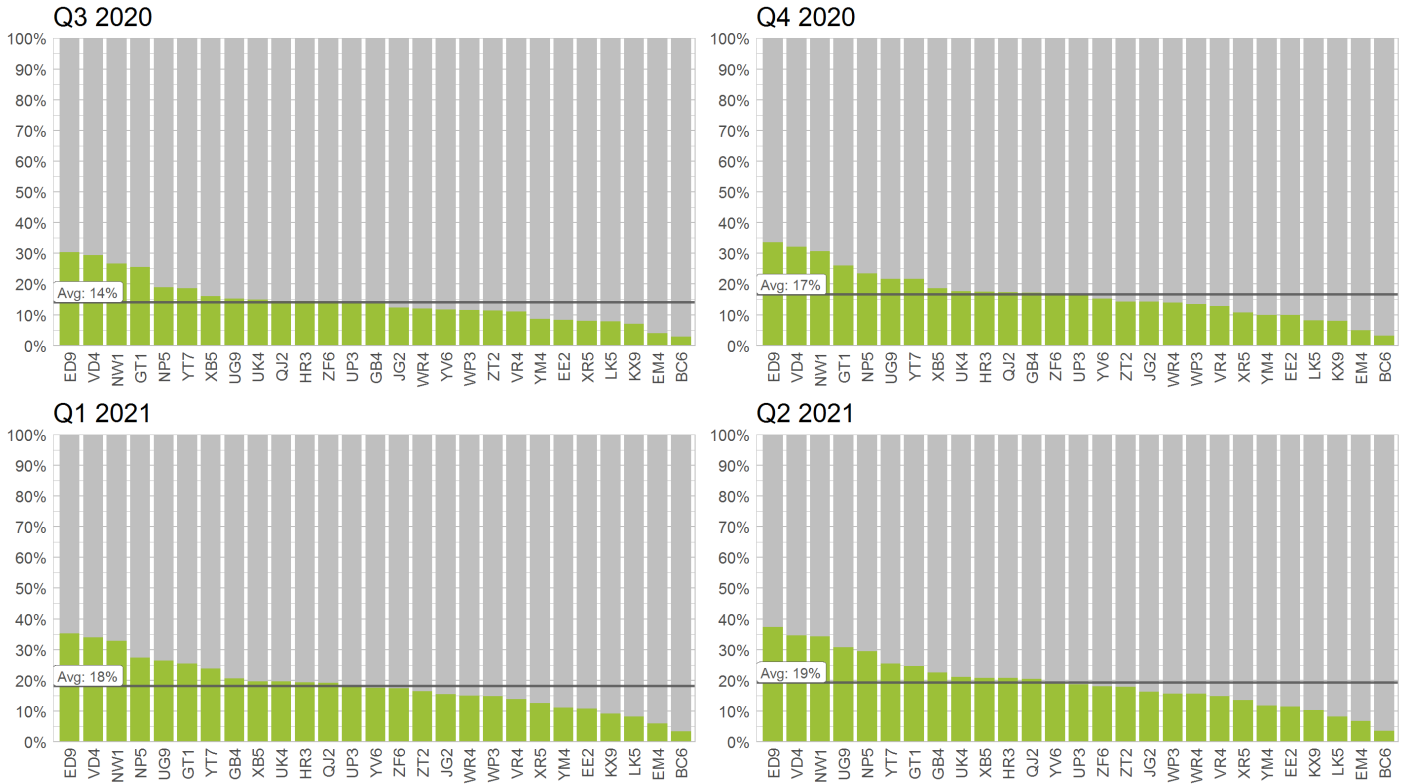
Org	Change in Rate
UG9	13%
NP5	13%
GB4	11%
ED9	10%
YT7	8%

Top 5 Highest Vaccination Rates in Q4 2021

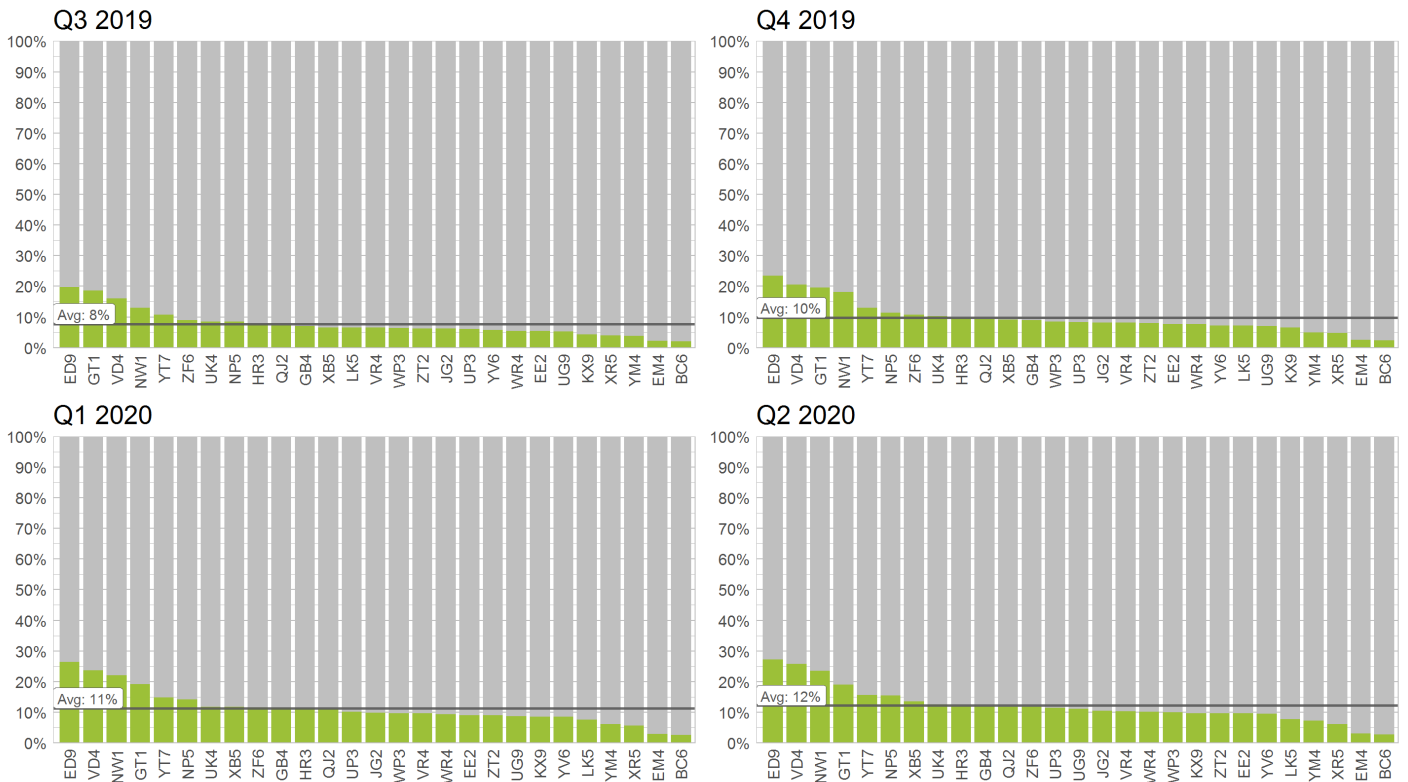
- Congratulations to the 5 organizations with the highest zoster vaccination rates in Q4 2021! One organization is even approaching 50%!

Baseline

Measurement Year 2020 (Intra-Covid)



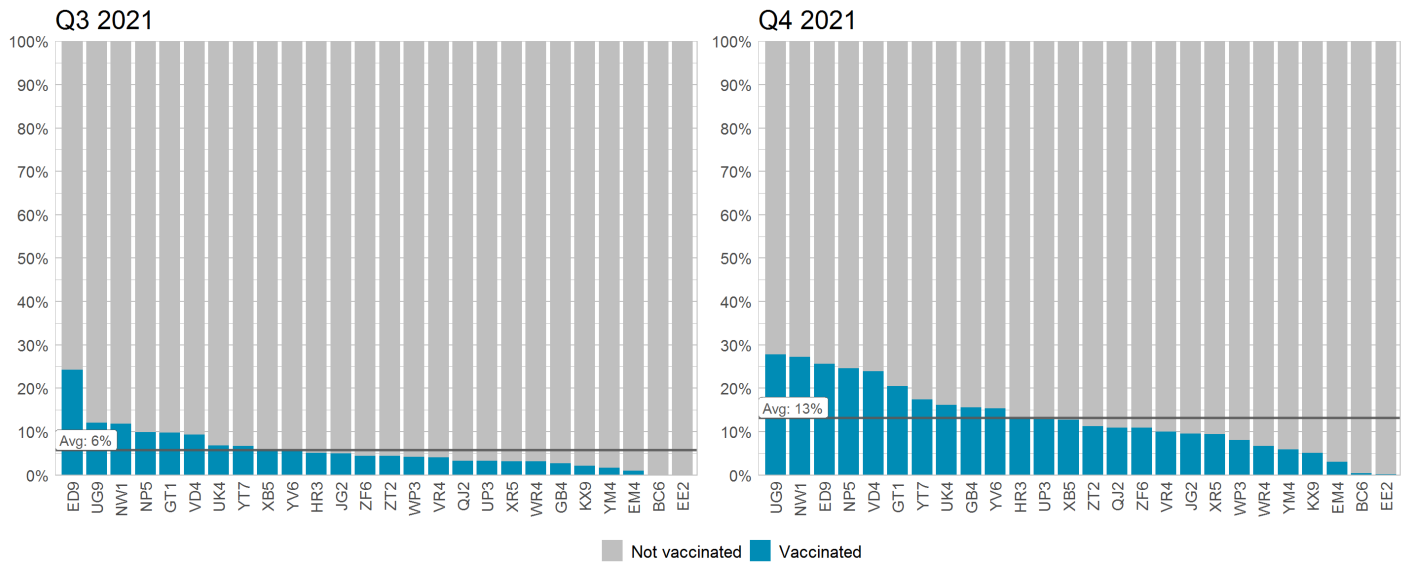
Measurement Year 2019 (Pre-COVID)



Bundle (M5)

Intervention

Measurement Year 2021



Bundle rates continue to increase over time, due in large part to increased zoster vaccination rates. Bundle rates went from 7% in Q4 2019, to 11% in Q4 2020, to 13% in Q4 2021. This is the most difficult measure to move, but it is the measure that best demonstrates attention to population health. It is encouraging and impressive that we've seen such improvement already!

Top 5 Highest Bundle Vaccination Rates in Q4 2021

Org	Rank	Rate
UG9	1	27.8%
NW1	2	27.2%
ED9	3	25.6%
NP5	4	24.6%
VD4	5	23.9%

Top 5 Most Improved Orgs by Rank

of spots moved from Q4 2020 to Q4 2021

Org	Increase in Rank
GB4	10
UG9	5
YV6	4
UK4	2
HR3	2

Top 5 Orgs with Largest Increase (or Smallest Decrease) in Rate

Change from Q4 2020 to Q4 2021

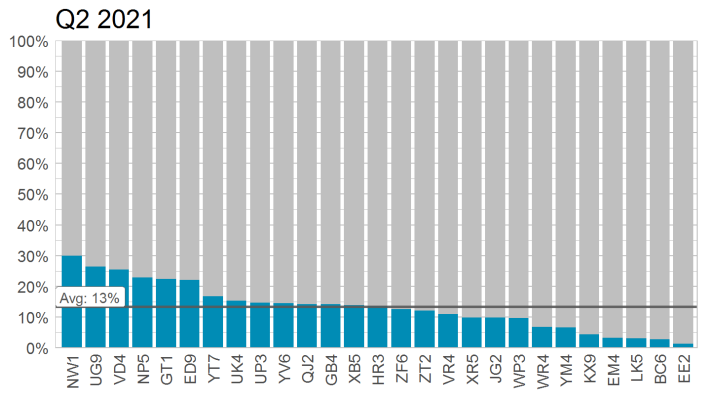
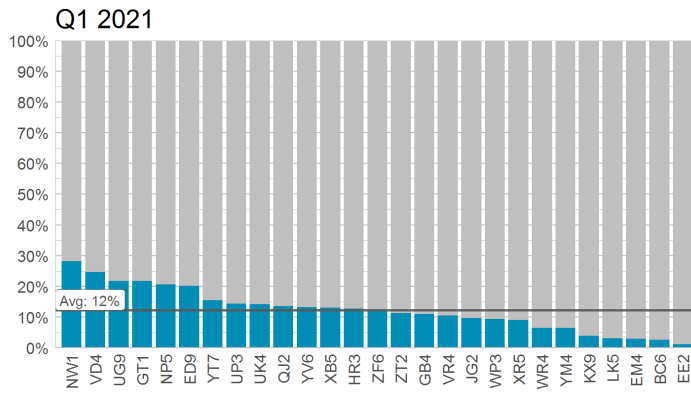
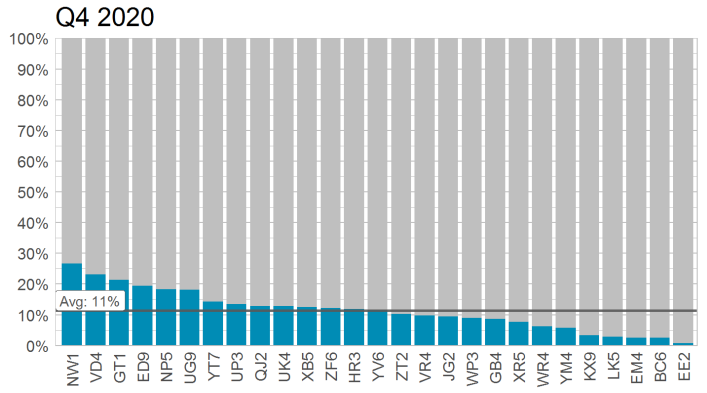
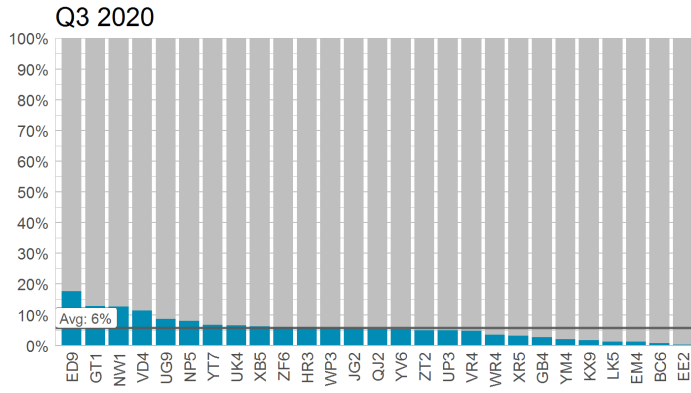
Org	Change in Rate
UG9	10%
GB4	7%
NP5	6%
ED9	6%
YV6	4%

Top 5 Highest Vaccination Rates in Q4 2021

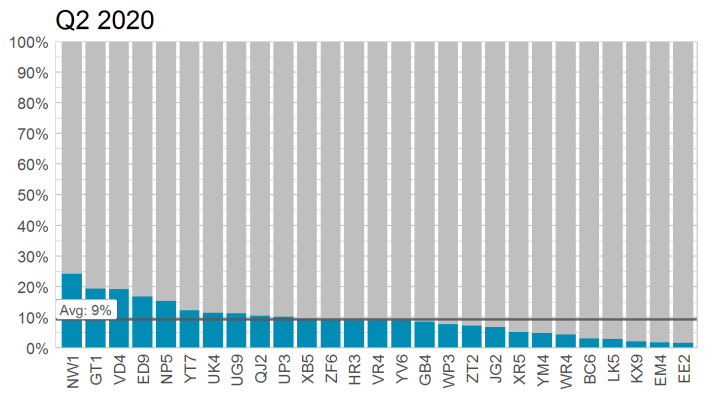
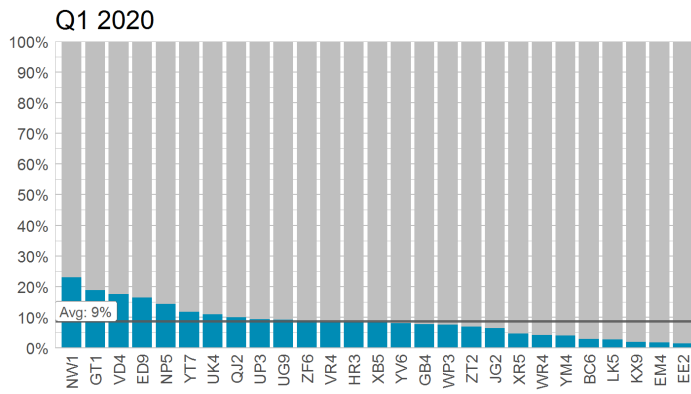
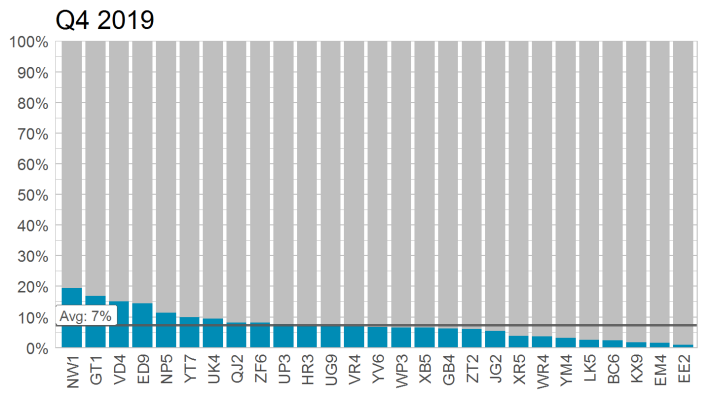
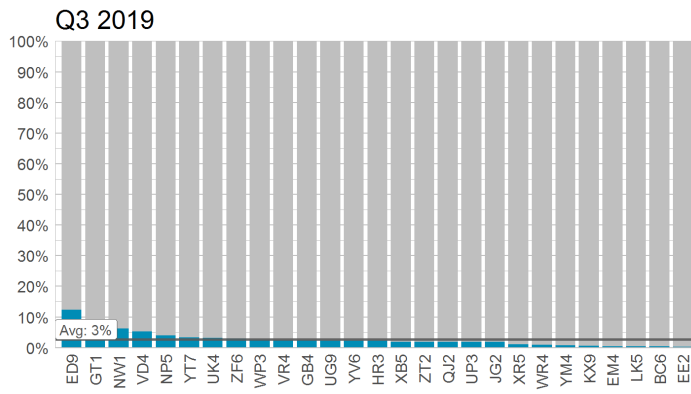
- Congratulations to the 5 organizations with the highest bundle rates in Q4 2021!

Baseline

Measurement Year 2020 (Intra-Covid)



Measurement Year 2019 (Pre-COVID)



Performance Summary

Q4 2021

Org	Track	Influenza	Pneumo.	Td/Tdap	Zoster	Bundle
BA4	Basic	13.6%	47.8%	-	-	-
BU9	Basic	35.9%	87.5%	-	-	-
DB3	Basic	27.0%	74.4%	-	-	-
DG2	Basic	29.2%	80.6%	-	-	-
ER3	Basic	20.6%	60.6%	-	-	-
HD3	Basic	36.8%	73.4%	-	-	-
JH8	Basic	37.9%	76.6%	-	-	-
LZ1	Basic	25.6%	69.6%	-	-	-
MC2	Basic	24.5%	72.4%	-	-	-
QH1	Basic	29.6%	77.5%	-	-	-
UJ3	Basic	5.7%	62.8%	-	-	-
VK4	Basic	35.2%	86.0%	-	-	-
VW5	Basic	49.3%	86.4%	-	-	-
WX9	Basic	34.8%	86.8%	-	-	-
XX3	Basic	30.5%	87.7%	-	-	-
Zj9	Basic	23.8%	79.7%	-	-	-
BC6	Core	1.5%	57.1%	32.7%	4.2%	0.4%
BH5	Core	23.5%	5.5%	3.5%	2.3%	1.2%
ED9	Core	34.0%	87.4%	73.7%	43.8%	25.6%
EE2	Core	14.1%	63.3%	39.6%	10.5%	0.2%
EM4	Core	21.2%	72.6%	39.3%	9.0%	3.0%
GB4	Core	42.4%	81.7%	63.8%	27.8%	15.6%
GT1	Core	32.3%	81.6%	57.0%	28.8%	20.5%
HR3	Core	35.3%	80.9%	54.3%	24.4%	13.1%
JG2	Core	14.9%	64.1%	38.1%	18.9%	9.5%
KX9	Core	25.5%	67.8%	23.6%	10.9%	5.1%
NP5	Core	42.0%	87.3%	70.5%	36.1%	24.6%
NW1	Core	43.1%	86.9%	77.6%	38.2%	27.2%
QJ2	Core	24.9%	84.3%	63.2%	24.1%	10.9%
UG9	Core	46.4%	84.7%	71.8%	35.2%	27.8%
UK4	Core	33.8%	82.0%	65.1%	25.8%	16.1%
UP3	Core	32.0%	76.6%	52.3%	21.0%	12.8%
VD4	Core	42.4%	86.2%	66.8%	37.4%	23.9%
VR4	Core	47.4%	87.7%	49.9%	16.4%	10.0%
WP3	Core	23.4%	63.3%	51.3%	18.5%	8.0%
WR4	Core	33.5%	67.2%	43.1%	17.6%	6.7%
XB5	Core	38.7%	81.0%	54.3%	22.8%	12.7%
XR5	Core	23.6%	81.8%	53.4%	16.4%	9.4%
YM4	Core	25.1%	74.1%	42.0%	12.4%	5.9%

Org	Track	Influenza	Pneumo.	Td/Tdap	Zoster	Bundle
YT7	Core	37.6%	80.6%	61.8%	30.1%	17.4%
YV6	Core	34.5%	85.7%	61.8%	22.8%	15.3%
ZF6	Core	26.3%	81.3%	51.6%	19.2%	10.9%
ZT2	Core	26.5%	81.8%	52.9%	20.5%	11.2%